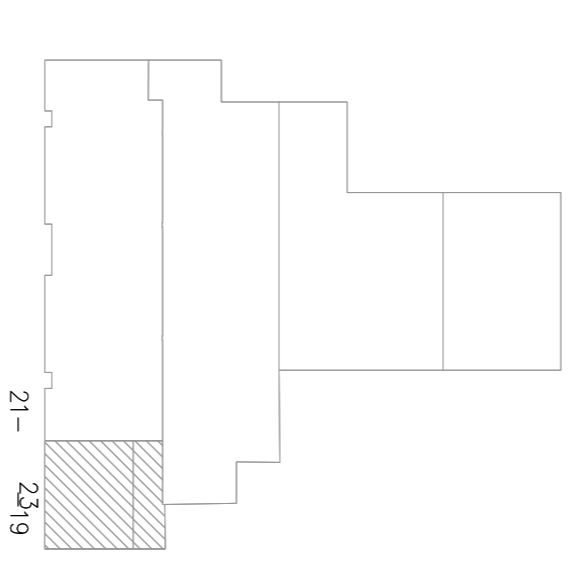
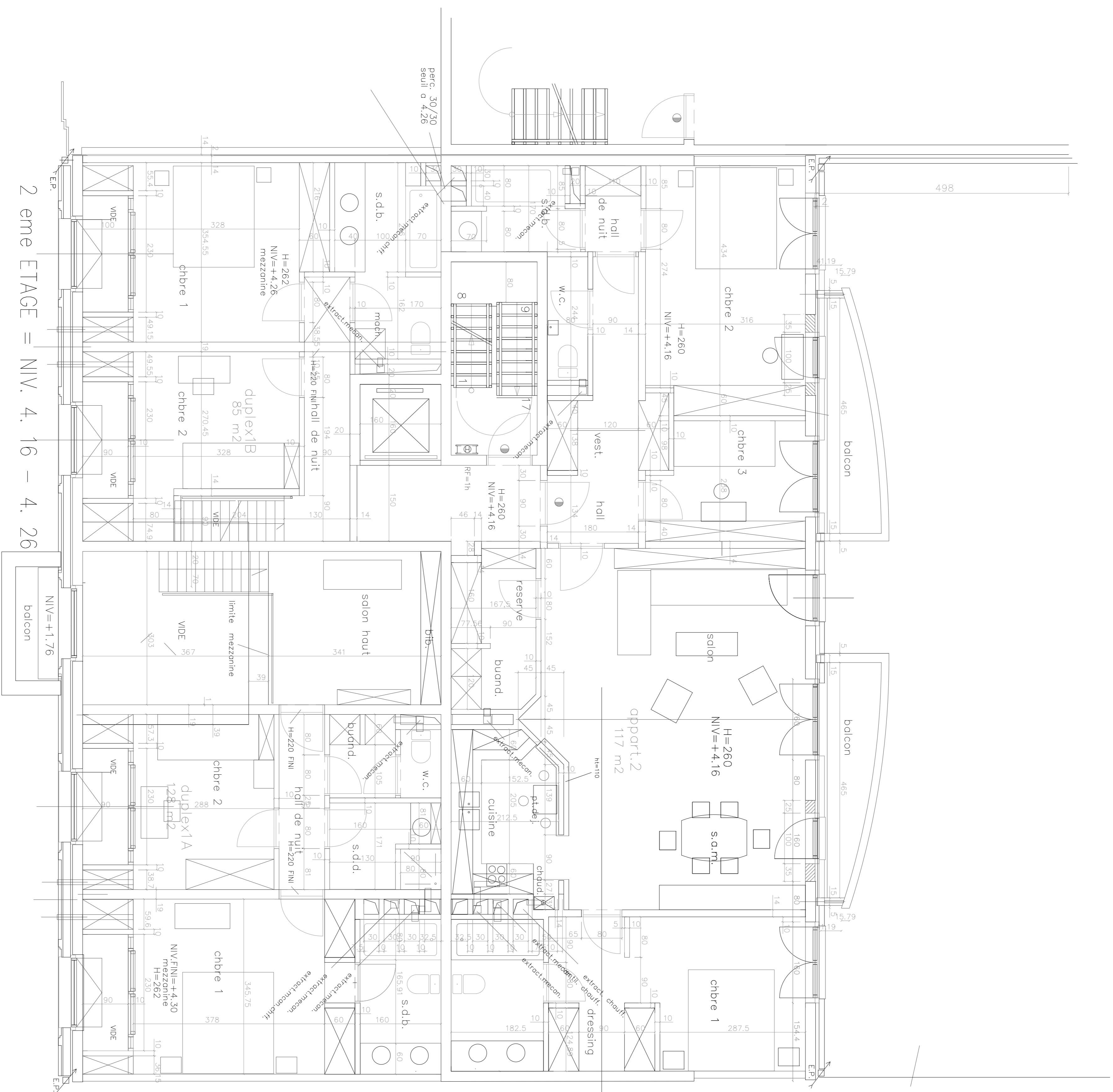


maison de maître
 appart. + commerces

- niv. rez - 3J0
- niv. 1^{er} - 1J6 - 1.36
- niv. 2^{eme} - 4J6 - 4.26
- niv. 3^{eme} - 7J6
- niv. 4^{eme} - 10J6
- niv. 5^{eme} - 13J6
- niv. 6^{eme} - 16J6



1^{er} ETAGE - NIV. 1.16 - 1.36



maison de maitre
 appart. + commerces

- niv. rez = -3.10
- niv. 1er = 1.16 - 1.36
- niv. 2eme = 4.16 - 4.26
- niv. 3eme = 7.16
- niv. 4eme = 10.16
- niv. 5eme = 13.16
- niv. 6eme = 16.16

2 eme ETAGE = NIV. 4. 16 - 4. 26